



NOMINAL AND PHYSICAL SPECS

Frequency Response	±3dB 40Hz - 18kHz
Usable Low Frequency	-10dB @ 31Hz
Sensitivity (1 W/1 M)	LF: 104 dB MF: 106 dB HF: 108 dB
Max SPL (1 M)	142 dB SPL
Impedance	LF: 4 ohms MF: 8 ohms HF: 8 ohms
Power Handling	LF: 1400 Wrms 2800 Wprogram MF: 400 Wrms 800 Wprogram HF: 80 Wrms 160 Wprogram
Dimensions:	Height 48 inches Width (front) 27.75 inches Width (rear) 16.5 inches Depth 25.5 inches Weight 235 lbs.
Trapezoid:	12.5 deg. per side
Replacement Parts	LF 2 ea. B&C Speakers 15PZB40 MF 2 ea. B&C Speakers 8PL21-16 HF 1 ea. B&C Speakers DE85-8

DESCRIPTION

The TCS2500 is a full range 3-way loudspeaker system ideally suited for medium to far throw applications. Having a common (to TCS1500/TCS1800) trapezoidal shape, it can be easily stacked or flown to create accurate system arrays. The TCS2500 features dual front loaded 15" woofers for maximum low frequency response, two horn loaded 8" midrange drivers, and a 2" exit HF compression driver mounted to 60 x 40 constant directivity

APPLICATIONS

Used for permanent installations or portable touring systems.

For use in:

Live Music Clubs	Large Worship Centers
Concert tours	Festivals

FEATURE DATA

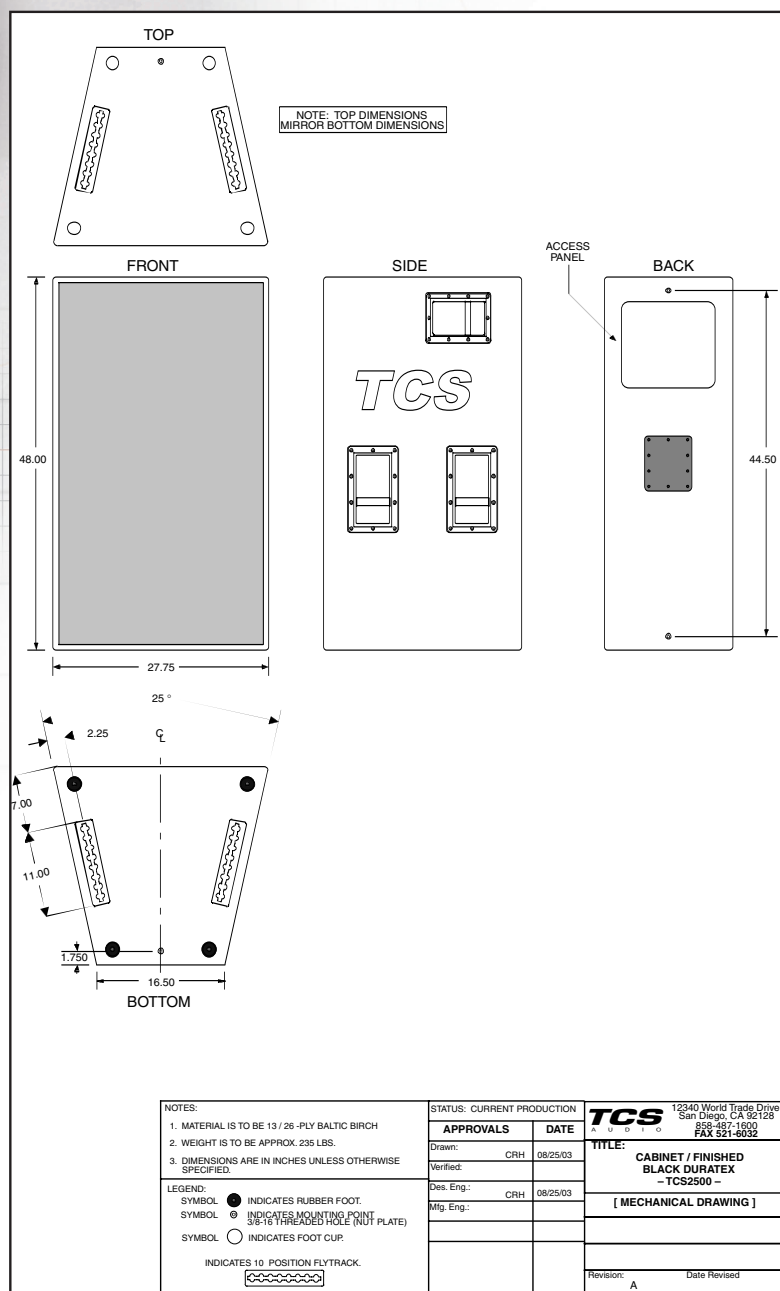
Model Number	TCS2500
System Configuration	3-Way, Full Range Triamplified
Connections	2 x Neutrik NL8
LF system	2x15" Front Loaded
MF system	2x8" Horn Loaded
HF system	2" exit 60H x 40V Constant Directivity
Cabinet Type	Trapezoidal
Enclosure Structure	13 ply and 26 ply Baltic Birch
External Coating	Duratex
Grille Material	Foam backed 14 Ga. powder coated perforated steel
Suspension Hardware	10 position flytrack 2 each top and bottom 3/8-16 flypoints - 4 each

The TCS2500 shall be a dedicated full range 3-way loudspeaker system and shall consist of two (2) front loaded 15-in. LF transducers, two (2) horn loaded 8-in. MF transducers and one HF transducer coupled to a 2" exit 40° x 60° constant directivity horn. The MF and HF sections shall be mounted in a coaxial configuration.

Frequency response shall be no more than ±3dB 40Hz - 19kHz on axis. The loudspeaker shall be capable of producing a maximum SPL of 142dB at 1 meter. The LF section shall handle a minimum of 2800 Watts with a nominal impedance of 4 ohms. The MF section shall handle a minimum of 800 Watts with a nominal impedance of 8 ohms. The HF section shall handle a minimum of 160 Watts with a nominal impedance of 8 ohms.

The loudspeaker shall incorporate two (2) Neutrik NL8 connectors wired in parallel to enable chaining of multiple loudspeakers. The cabinet construction shall be of 13-ply Baltic Birch plywood on all sides with the baffle being 26-ply Baltic Birch plywood and shall incorporate extensive internal bracing. The cabinet shall be of a trapezoidal shape and consist of four (4) 10 position flytracks 2 each top and bottom and four (4) fly points to accept 3/8"-16 eye-bolts. The cabinet shall be finished with DuraTex[®] finish. The transducers shall be protected with a foam backed Plastikote[®]-finished 14 ga. perforated steel grill.

TCS2500



Processor Settings

TCS2500	Low	Mid	High
Gain	+3dB	-3 dB	-2dB
Delay (milliseconds)	0.854	0.000	0.604
Polarity	Normal	Normal	Normal
L0 Shape	L-R 24dB/Oct	But 24dB/Oct	But 24dB/Oct
L0 Frequency	40 Hz - 100 Hz	350 Hz - 400 Hz	1.5kHz - 2.5kHz
Hi Shape	But 24dB/Oct	But 24dB/Oct	N/A
Hi Frequency	350 Hz - 400 Hz	1.5kHz - 2.5kHz	N/A
EQ1 Type	Bell	Bell	Hi 6
EQ1 Frequency	112 Hz	900 Hz	16kHz
EQ1 +/-	-6dB	+6dB	+3dB
EQ1 Width	0.10 Octave	0.20 Octave	N/A
EQ2 Type	Bell	N/A	N/A
EQ2 Frequency	170 Hz	N/A	N/A
EQ2 +/-	+3.5dB	N/A	N/A
EQ2 Width	0.30 Octave	N/A	N/A

Recommended processor settings are based upon the use of BSS FDS-336/334 MINIDrive